

Pisko® Anchor point

Installation on Sandwich panel using Pisko Strong wall mounting plate

Pisko Strong wall mounting plate is designed for use on horizontally installed Sandwich-panels with a minimum surface thickness of 0.6 mm, a minimum surface yield strength of 280 MPa, a minimum total panel thickness of 150 mm and a minimum panel tensile strength of 0.095 MPa. The wall anchorage plate can only be installed on an intact panel (not on a narrowed panel). In the event of an accident, the design load ($A_d = 10 \text{ kN}$)* imposed by the wall mounting plate shall be taken into account in the panel sizing when designing the structure. Safety product solutions may only be used with sandwich panels of which the load-bearing capacity is known and considered as part of the structure.

The minimum installation distance of the mounting plate is 150 mm from the edge anchorage of the panel to the edge of the mounting plate. The mounting plate shall be installed below the top fixing screw of the panel and inside the outermost fixing screw. If the panel has a surface profile, the mounting plate shall be installed so that the fixing screws are in the smooth part of the panel surface (not in the shadow groove).

The wall mounting plate can also be used on other wall materials such as wood and concrete structures. In this case, the fixing must be designed and dimensioned so that the fixings and substructure can withstand the dimensioning value $A_d = 10 \text{ kN}$ *. When installing on non-sandwich panels, care must also be taken to ensure watertightness between the fixing point and the wall structure.

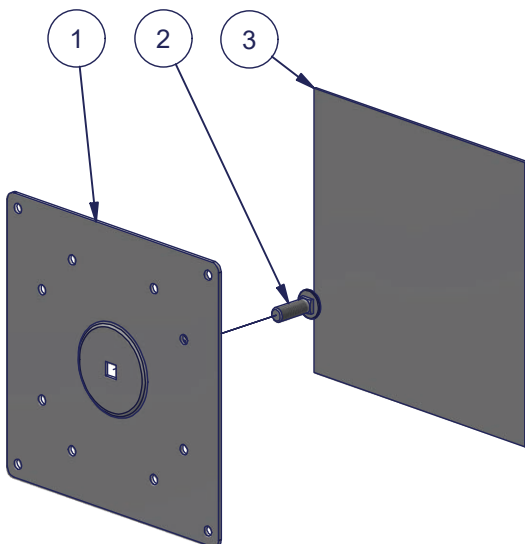
In the event of an accident, the forces transmitted from the wall mounting plate to the panel may damage the surface layer of the panel.

INSTALLATION

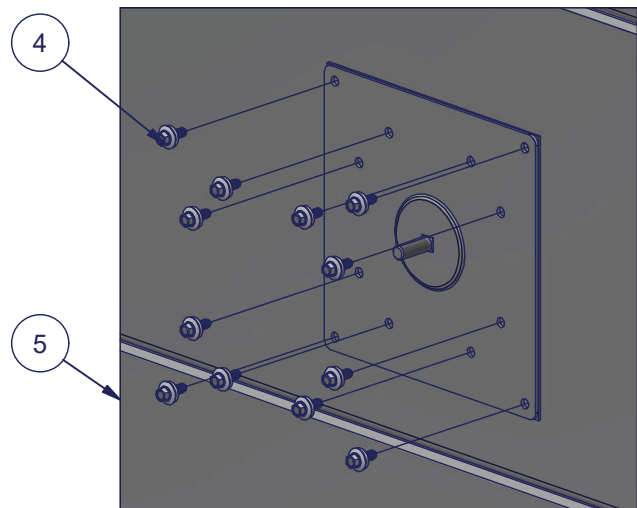
Install the M10 mounting plate bolt to the bottom of the wall mounting plate. Clean the bottom of the plate with a cleaning cloth and glue the adhesive sealing to the bottom of the fixing plate. Use only the cleaning cloth and sealing sheet supplied with the wall mounting plate.

Clean the attachment point on the surface of the Sandwich panel with the supplied cleaning cloth and glue the wall mounting plate to the panel with the adhesive sealant. Lock the glued fixing plate in place using twelve Pisko sheet metal screws in the positions shown in the picture.

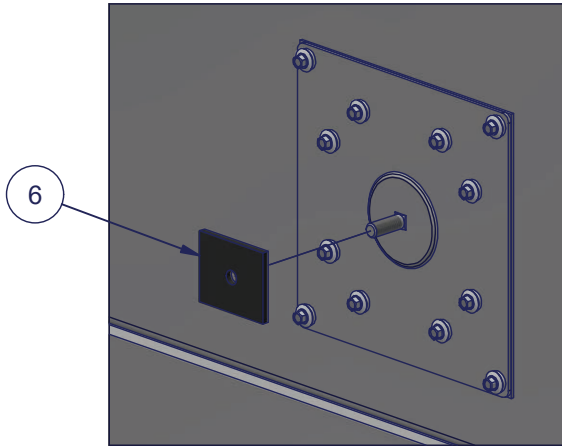
The adhesive sealing itself forms a strong joint, so make sure the bolt is in place and in the correct position before fixing the panel.



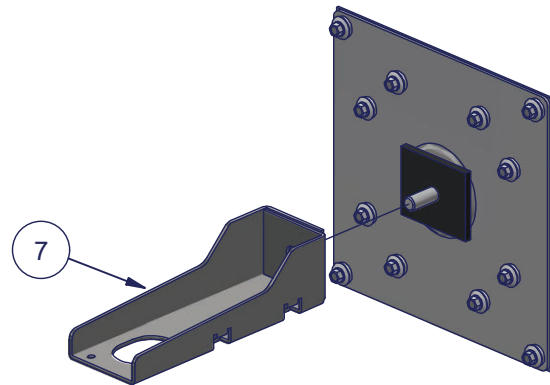
Part	Description
1	Pisko Strong wall mounting plate, M10 (200 x 200 mm)
2	Lock screw, 30 mm
3	Adhesive sealing 200 x 200
4	Pisko sheet metal screw
5	Sandwich panel



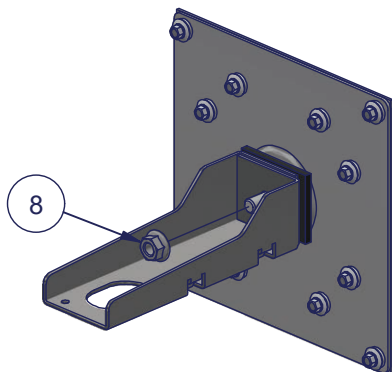
Install the EPDM seal on the M10 mounting bolt.



Install the anchor point on the M10 mounting bolt on top of the EPDM seal.



Attach the fixing support on the mounting plate with M10 flange bolt. Tightening torque 10 Nm.



Part	Description
6	EPDM seal
7	Anchor point
8	Mounting plate bolt A2 M10

USE

Individual anchor points do not replace the need for roof walkways, ladders and continuous safety rails. It is not meant to be used under continuous load while working on the roof as this may damage the product and/or the surface layer of the panel.

Amount of needed anchor points per wall is to be determined by the designer. The mounting substrate (wall structure) should be strong enough to withstand a minimum of 10 kN static and dynamic loads coming from the anchor point. The anchor points should not be installed next to the edge of the roof due to safety of use.

- Anchor point is a safety device that ensures safety in case of falling
- Only one person at a time, with a total weight of max. 150 kg, including the equipment, is allowed to fix a safety rope to the anchor point
- Use proper, approved safety rope / lifeline only
- Before using the anchor point, perform a visual inspection of the product and make sure the connection of the product is tight and secure

MAINTENANCE

Pisko products are hard-wearing and safe to use, guaranteed by the ongoing quality control and development work by Piristeel Ltd, as well as correct installation of the products according to the manufacturer's instructions. To ensure the reliability and safety of the products, the property owner must carry out yearly inspection and maintenance procedures and monitor that the installed products and the substructure surrounding the products are in good condition.

Yearly Maintenance inspection checklist for Anchor point system:

- Check the tightness of joints, connections, fixings and attached devices
- Carefully inspect for a proper adhesion and/or condition of the wall/panel surface around the mounts. Check the wall attachments (fixings)
- As necessary, clear the attached devices of snow and ice
- As necessary, clean the area around the anchor point of tree leaves, debris and other contaminants.
- Checking the painting and galvanising of product surfaces and, if necessary, repair faults and touch up paintwork (slight edge corrosion due to use on the open loop of the anchor bracket is normal)
- Replace or repair any damaged or faulty parts as soon as possible to avoid any hazards.