

Pisko Anchor Points

A new, simple solution for attaching safety ropes



C900083

Proven safety

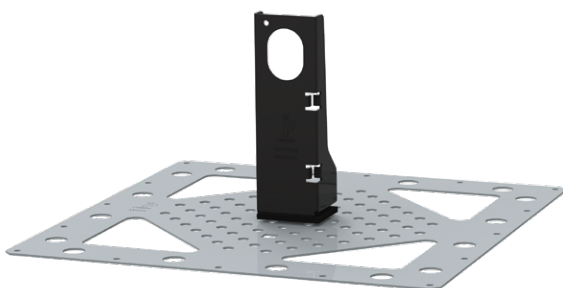
The Pisko anchor point can be used for creating anchor points on all surfaces able to withstand at least 10 kN of static and dynamic loads at the anchor point. The product is particularly well-suited for creating anchor points on low-pitched roofs. The Pisko anchor point, tested to meet the EN 516 Class 2 requirements, is intended to secure a suddenly falling person. The anchor point has been granted a RISE product certificate for the installation configurations shown in the brochure, in accordance with the Swedish national approval criteria.

Alongside with other Pisko products

The Pisko anchor point has been tested as an anchor point solution for the Pisko bitumen roof's mounting plate and for the Pisko UniSeam anchor point mounting platform. Both solutions can withstand the required loads in case of accidents.

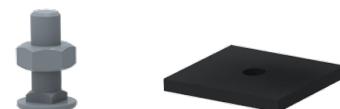


Please note that on high-pitched roofs, the anchor point primarily acts as an additional safety solution complementing other safety measures. It is not designed to replace safe roof walkways on roofs with a pitch over 1:8.



Best results with compatible products

The Pisko anchor point is securely installed on the platform with the customized stainless steel fixings only available from Piristeel. Water tightness and heat insulation are secured with a high-quality EPDM sealing solution customized for the product. Especially on large roof surfaces, we recommend installing an easy-to-spot Pisko anchor point indicator sign with a reflecting surface. This makes it easier to find the anchor point even from under heavy snow loads.



Enduring quality

The Pisko anchor point is made of strong, hot dip galvanized structural steel and coated with completely TGIC-free, Finnish-made high quality powder paint, fulfilling the Qualicoat 1 criteria. This combination gives the product enduring protection against Nordic weather conditions. When properly installed, used and maintained, this product provides a long-lasting solution for improving the operational safety of buildings.

Specifications

Pisko anchor point	Additional information
Product code	32308
Product dimensions	50 mm * 60 mm * 184 mm
Product weight	375 g
Material strength	2 mm
Pitch suitable for installation	Use recommendation: Low-pitched roofs as defined by the Finnish Roofing Association (Kattoliitto)
Material	Hot-dip galvanized coated structural steel
Coating	Qualicoat 1-quality powder coating
Coating warranty*)	15 years
Technical warranty*)	50 years
Classification of atmospheric corrosivity, product use recommendation	C2-C3
Corrosion protection performance level (ISO 12944-6:2018) **)	
Classification of corrosivity (ISO 12944-2:2017)	C4
Classification of durability (ISO 12944-1:2017)	M (medium)
Applicable standards and regulations	
BBR	Boverket's mandatory provisions and general recommendations, BBR
BFS	Boverket's byggregler 2014:3
SS 831361	Static loading test
EN 516	EN 516:2006 8.2 Prefabricated accessories for roofing - Installations for roof access - Walkways, treads, and steps
EN 10346	Continuously hot-dip coated steel flat products for cold forming. Technical delivery conditions
EN 10143	Continuously hot-dip coated steel sheet and strip. Tolerances on dimensions and shape (as applicable)
Product approval	Product certification / RISE C900083
Test report by accredited institution	RISE / 2P00668
Safety rope anchor point***)	Yes
Contents of delivery	Anchor point, customized EPDM rubber gasket, M10 flanged nut (A2 stainless steel), M10 customized locking bolt (A2 stainless steel), optional Pisko anchor point indicator sign
Packaging method	Separately
Maintenance	Installation, use, and maintenance of product according to provided instructions. Difficult stains can be cleaned with steel surface washing detergents such as Tikkurila Panssaripesu, or Teknos Rensa Steel. Follow the instructions provided with the cleaning agent. Very difficult stains can be removed by wiping with a rag dipped in turpentine, followed by rinsing with water.
Place of manufacture	Kauhava, Finland
Manufacturer	Piristeel Oy

*) According to the terms of the Pisko product warranty (warranty does not cover damage due to use of product, for example, edge corrosion due to paint damage).

**) Under normal conditions (C2-C3) high durability. The C4 conditions are extremely aggressive corrosive environments; they exist primarily on the west coast of Sweden and the Norwegian coastline by the sea. Durability, tested under standard EN ISO 12944-6, is medium (C4 M), with maintenance/re-painting required after 7–15 years of exterior use, more frequently where necessary.

***) When installed as per installation instructions onto a platform that meets the required loads. Max load 150 kg, with maximum of one person attached at a time.

Stock color



Black
RR 33

