



New Tech Machinery

The World's Finest Portable Rollforming Equipment



MACH II™ Gutter Machines 5", 6", 5-6 Combo

www.NewTechMachinery.com

MACH II™ Gutter Machines

The "ORIGINAL" polyurethane drive system. VERSATILE...INNOVATIVE...DEPENDABLE...PROFITABLE

The award-winning Mach II™ has taken the seamless gutter industry to a new level. The only way to compete in the gutter forming business is to own a Mach II. It is the most copied machine in the industry- don't get stuck with an imitation!!

STANDARD FEATURES

• Polyurethane Drive rollers	• Two 360° Rotatable Reel Stands for easy coil loading
• Stainless Steel Forming Rollers	• Electric Motor 3/4Hp, 110VAC, 60Hz, 1Ph, 11 AMPS
• Push Button RUN/JOG controls at Entry and Exit Ends	• Welded Tubular Steel Frame
• Forward Pulling, Easy Cut Shear for accuracy	• Industry's Best Warranty
• Power Interruption Safety Circuit	• Easy Lift Reels

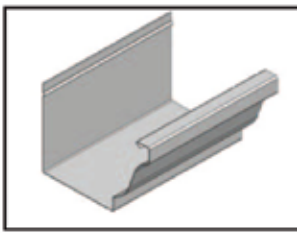
OPTIONS

ROS1 – Run Out Stands; ROS3 – Set of 3 Run Out Stands	EZC – EZ-Counter Computerized Length Controller
RL16 – 16" Reel (380mm)	CVR-GM5/6/56 – Machine Covers
RL20 – 20" Reel (500mm)	BB5/ BB6 – Bottom Bead Assembly, 5" or 6"
TRN – Turnstile Reel Stand	GFI – Ground Fault Interruption Plug
RAC – Transfer Bars	BF5 – 1" Back Flange for 5"
CR5/6 – 5" or 6" Coil Cradle	BF5SH – 1" Back Flange Shear for 5"
GA5 / GA6 - 5" or 6" GutterArt embossing unit	BF15-5 – 1-1/2" Back Flange for 5"
HK5 – Alcoa Hook Assembly, 5"	BF15-5SH – 1-1/2" Back Flange Shear for 5"
HK6 – Alcoa Hook Assembly, 6"	BF6 – 1" Back Flange for 6"
HK56 – Alcoa Hook Assembly, Combo	BF6SH – 1" Back Flange Shear for 6"
MG12V – 1Hp, 12VDC, 80Amps (Battery not included)	BF15-6 – 1-1/2" Back Flange for 6"
MG230-50CE – 50 CE Certified Wiring	BF15-6SH – 1-1/2" Back Flange Shear for 6"
ELEC2 – 3/4 Hp, 110VAC, 50 Hz, 1Ph, 11Amps	RISER6-8 – Machine Riser for Mounting in Low Trailer
ELEC3 – 3/4 Hp, 220VAC, 50Hz, 1Ph, 5Amps	RISER10-12 – Machine Riser for Mounting in Low Trailer

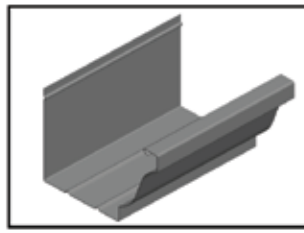
SPECIFICATIONS

5" Gutter Machine <ul style="list-style-type: none"> Length 8' (2.4m) Width 2' (.6m) plus shear handle Height 3'10" (1.2m) Weight 1000 lbs (454kg) 	MATERIALS FORMED <ul style="list-style-type: none"> Painted Steel 30 ga. to 24 ga. (.3mm to .6mm) Painted Aluminum .019" to .032" (.5mm to .8mm) Copper 16 oz. to 20 oz. 3/4 Hard (.5mm to .7mm)
6" Gutter Machine <ul style="list-style-type: none"> Length 10' (3.0m) Width 2' (.6m) plus shear handle Height 3'10" (1.2m) Weight 1250 lbs (570kg) 	SHEAR <ul style="list-style-type: none"> Manually Powered Hardened Tool Steel Blade and Shear Dies
5"/6" Combo Gutter Machine <ul style="list-style-type: none"> Length 10' (3.0m) Width 2' (.6m) plus shear handle Height 3'10" (1.2m) Weight 1350 lbs (610kg) 	MATERIAL WIDTH <ul style="list-style-type: none"> 5" Machine: 11-3/4" to 12-3/8" (300mm to 315mm) 6" Machine: 15" (380mm)
SPEED <ul style="list-style-type: none"> 50 ft./min (15m/min) Approx. 	DRIVE <ul style="list-style-type: none"> Electrically Driven Polyurethane Rollers

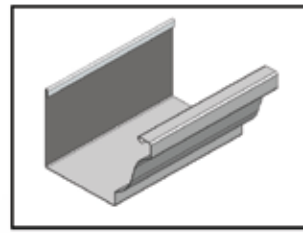
Profiles



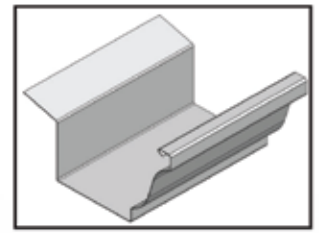
Straight Back Gutter



Gutter w/ Bottom Bead

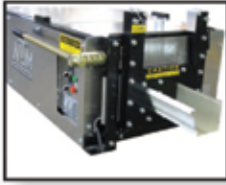


Gutter w/ Alcoa Hook

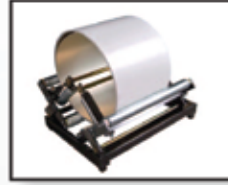


Gutter w/ Back Flange

Options & Features



Shear



Coil Cradle



Run Out Stand



Bottom Bead Assembly



2-Button Remote Controller (start & stop)



EZ-Counter Computerized Length Controller



Push Button



Cover for Gutter Machines

GutterArt™: Unique Gutter Embossing Unit



Ashley



Aztec



Stars & Stripes

- * All patterns available in 5", 6" and 5/6" combo configurations.
- * Custom patterns also available. Just ask!

Warranty

- Three years parts / Three years labor (Including Electrical)
(* GutterArt™ Warranty is 1 Year Parts / 1 Year Labor)
- Limited lifetime separation on drive rollers
- Limited lifetime on stainless steel forming rollers



Scan here to view the MACH II Combo changeover:

5" to 6"
6" to 5"

082014

U.S. PATENT NO. 5,394,722
U.S. PATENT NO. 5,740,687
U.S. PATENT NO. 7,240,530